

A LIFE SPACE WHICH COMPLETES  
ALL YOUR DESIRES & DEMANDS



 **ASHAR AXIS**  
A WORLD THAT IS **FIT FOR LIFE.**

1 & 2 BHK LUXURY HOMES | Majiwada Junction, Thane, West - 400601



Artist's impression



# A TREASURE TROVE OF EXPERIENCES THAT IS FIT FOR LIFE



Ashar Axis is a beautiful ode to life.

A life that's lived beyond the dreary confines of square feet & carpet areas.

A life where every amenity is a beautiful expression of our thoughtfulness.

A life where travelling to and from work isn't a dreaded ordeal.

**Expertly planned keeping your aspirations and necessities in mind, this project is an Axis around which your life can revolve.**



**35 STOREY**  
GRAND LIFESTYLE



**3 LEVEL**  
AMENITY ZONES



**1 & 2 BHK**  
LUXURY HOMES



**FURNISHED WITH**  
ELECTRONIC DEVICES

# MAJIWADA - ON AN UPWARD JOURNEY THAT IS FIT FOR LIFE

---

In the last few years, Majiwada has seen a dramatic transformation when it comes to developing infrastructure and facilitating connectivity. From public transport to shopping malls, everything has been upgraded to give the residents a hassle-free life. With a string of future projects already on the cards, Majiwada is going to be the next talk of the town.

The micromarket has seen 25% appreciation since 2017\* & it is expected to see further appreciation of 15-20% due to upcoming infrastructure.\*

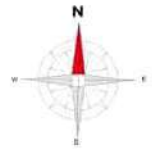


\*PropEquity



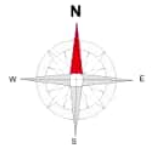


# TYPICAL FLOOR PLAN





# MASTER LAYOUT PLAN



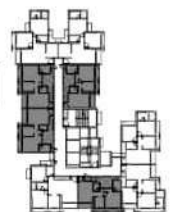
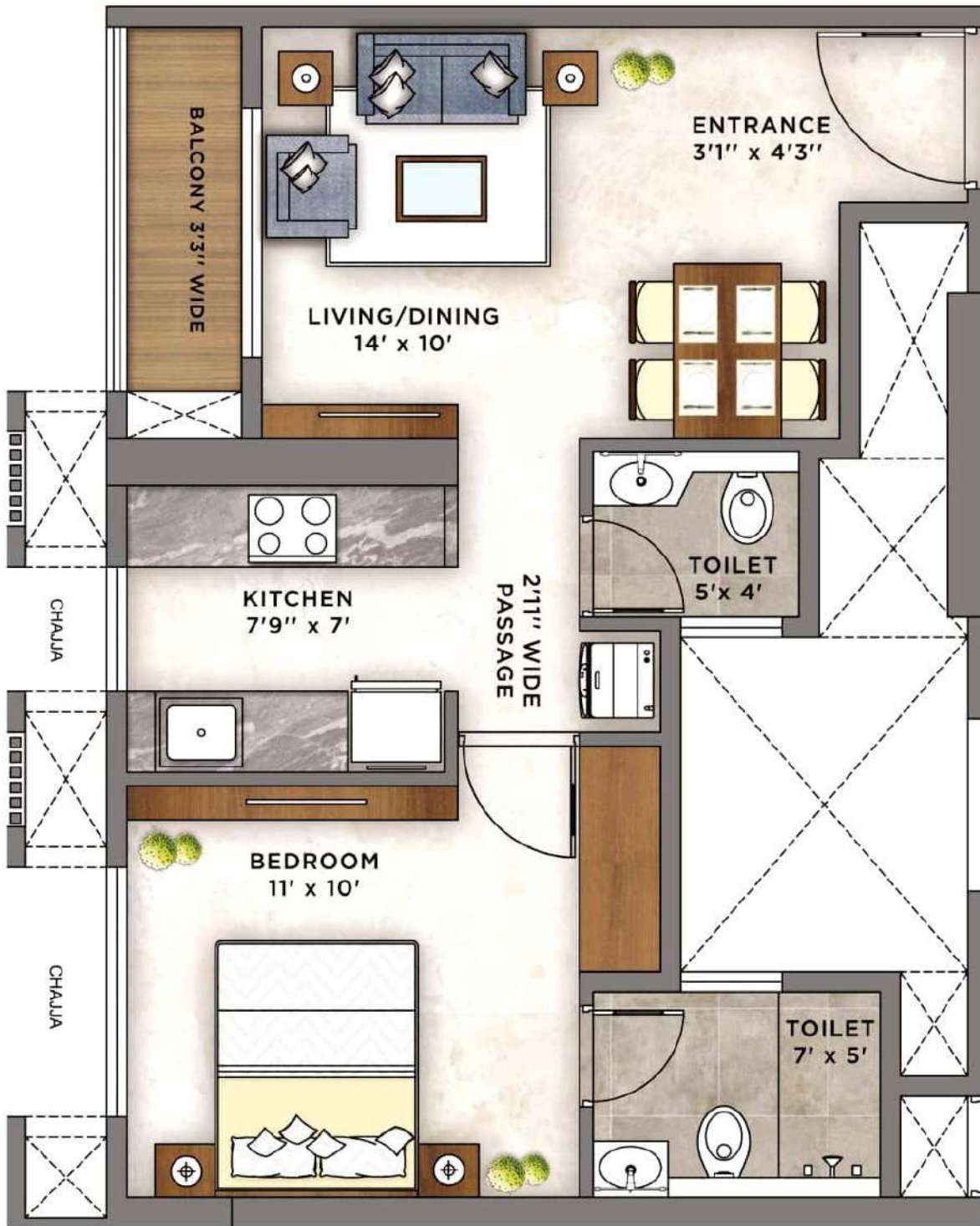
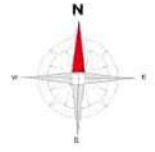
## LEGENDS

1. Senior Citizen Corner
2. Rock Climbing
3. Adventure Zone
4. Amphitheatre
5. Toddler's Play Area
6. Jogging Track
7. Infinity Swimming Pool
8. Kids Pool
9. Pool Loungers
10. Sunset View Point
11. Barbeque Party Lawn
12. Green pathway to Gym & Work Pods
13. Multi-purpose Court
14. Box Cricket
15. Reflexology Path
16. Mini Golf
17. Stargazing Deck
18. Yoga & Meditation Deck
19. Roof top Party Deck
20. Spillover green space



# 1 BHK - 462 SQ.FT.

FLAT NO. 03,05,06,07



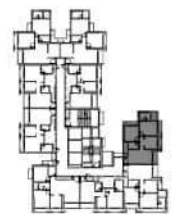
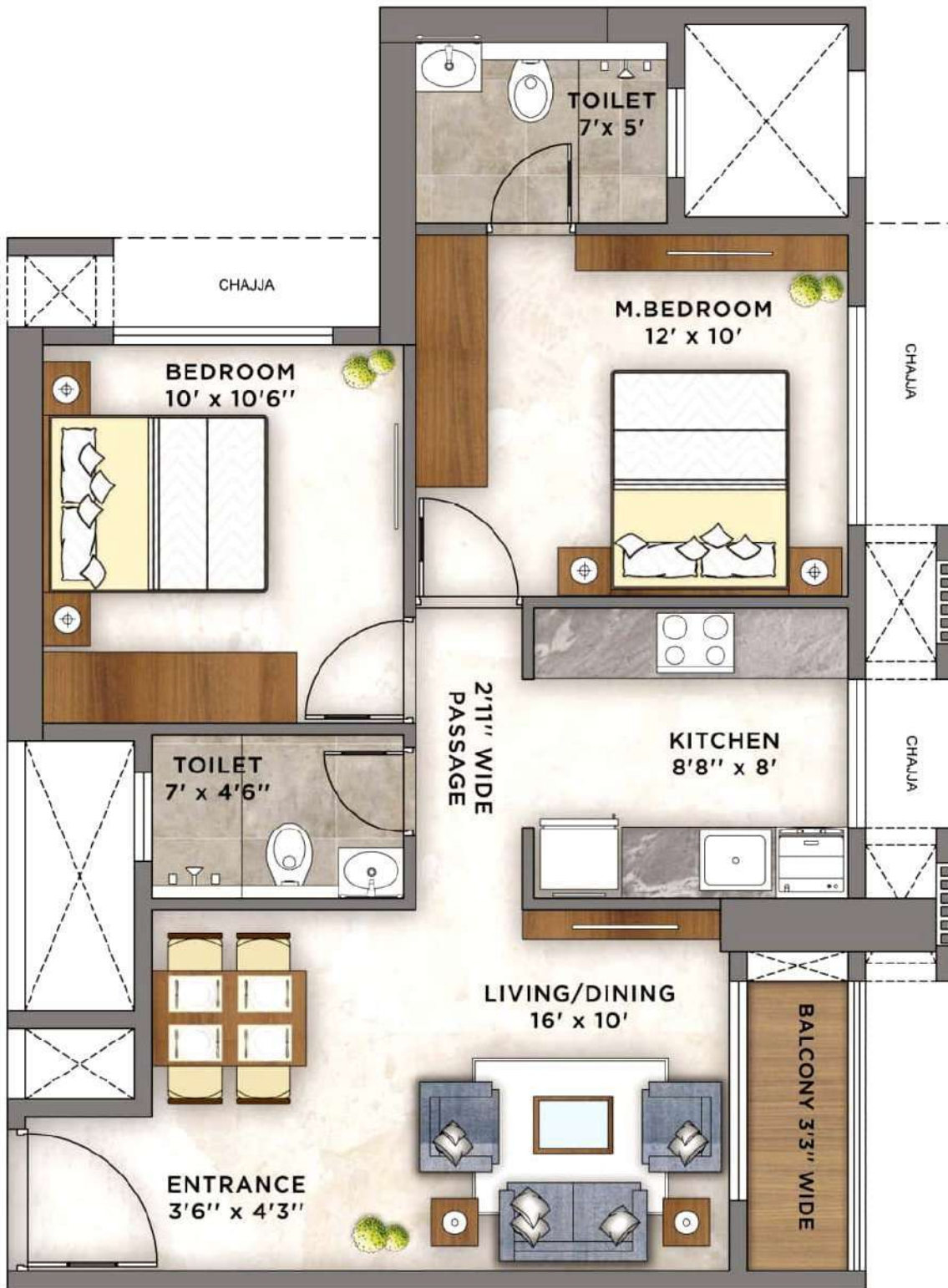
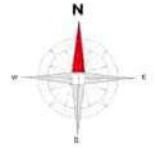
KEY PLAN





# 2 BHK SMART - 611 SQ.FT.

FLAT NO. 01, 02

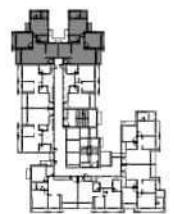
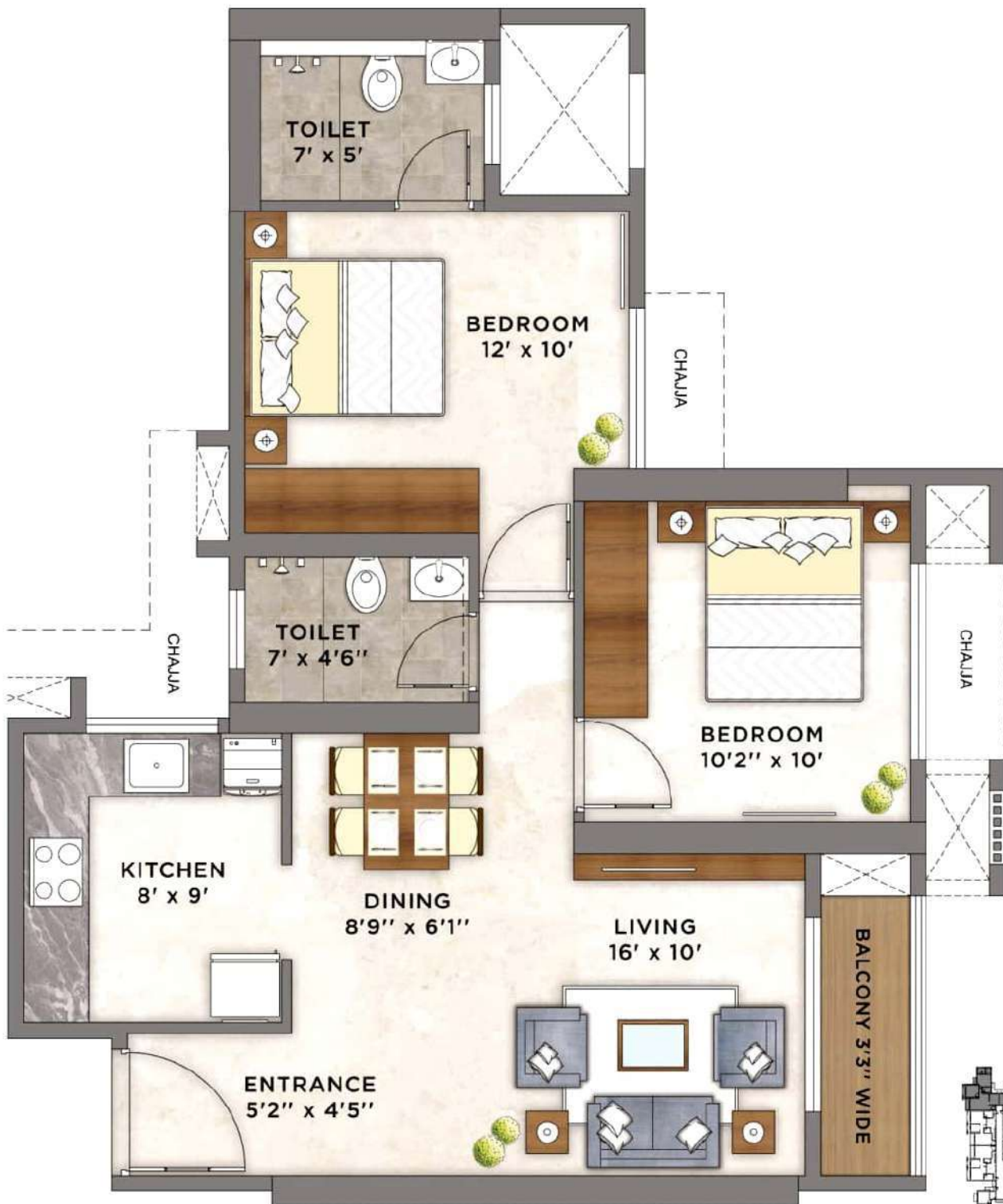
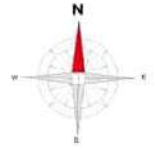


KEY PLAN



# 2 BHK OPTIMA - 656 SQ.FT.

FLAT NO. 08,09



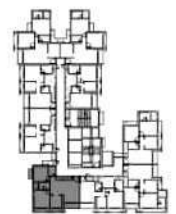
KEY PLAN





# 2 BHK LUXURY - 678 SQ.FT.

FLAT NO. 04



KEY PLAN





# IMAGINE...

if your 50<sup>th</sup> birthday could be celebrated with starry nights and live music?

if your pool party could turn into a sundowner experience?

if your workout could turn into a rejuvenating session enhanced by city views?

if you had a dedicated workspace for that last minute meeting?

if you could play golf right in the heart of Thane?

**A MEDLEY OF EXQUISITE  
INDULGENCES THAT IS  
FIT FOR LIFE**





## **O° - GROUND LEVEL**

- Rock Climbing
- Adventure Zone
- Cabana Seating Area
- Amphitheatre
- Senior Citizen Park
- Toddler's Play Area
- Jogging Track



# 270° THE INFINITY



## 270° - 21<sup>ST</sup> LEVEL

- Infinity Swimming Pool
- Kids Pool
- Barbeque Party Lawn
- Pool Loungers
- Sunset View Point
- Library Zone & Indoor Games Area

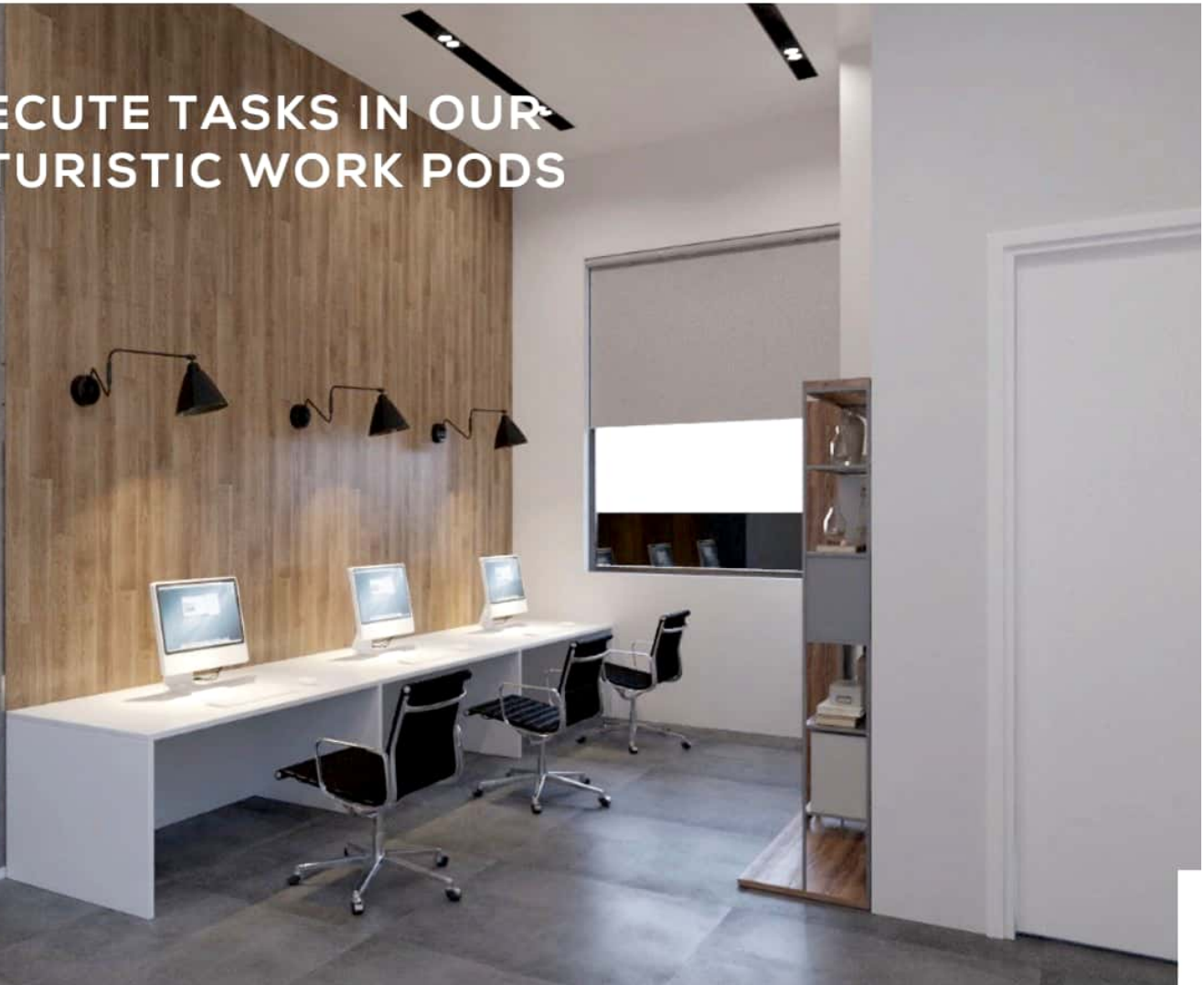


# MAKE FITNESS YOUR PRIORITY



Artist's impression

# EXECUTE TASKS IN OUR FUTURISTIC WORK PODS



Artist's impression



# 360° THE ATMOS



## 360° - TERRACE LEVEL

- Rooftop Party Deck with Spillover Green Space
- Yoga & Meditation Deck
- Stargazing Deck
- Mini Golf
- Multi-Purpose Court
- Box Cricket
- Reflexology Path



# PLAY YOUR FAVORITE SPORT IN OUR MULTIPURPOSE COURT



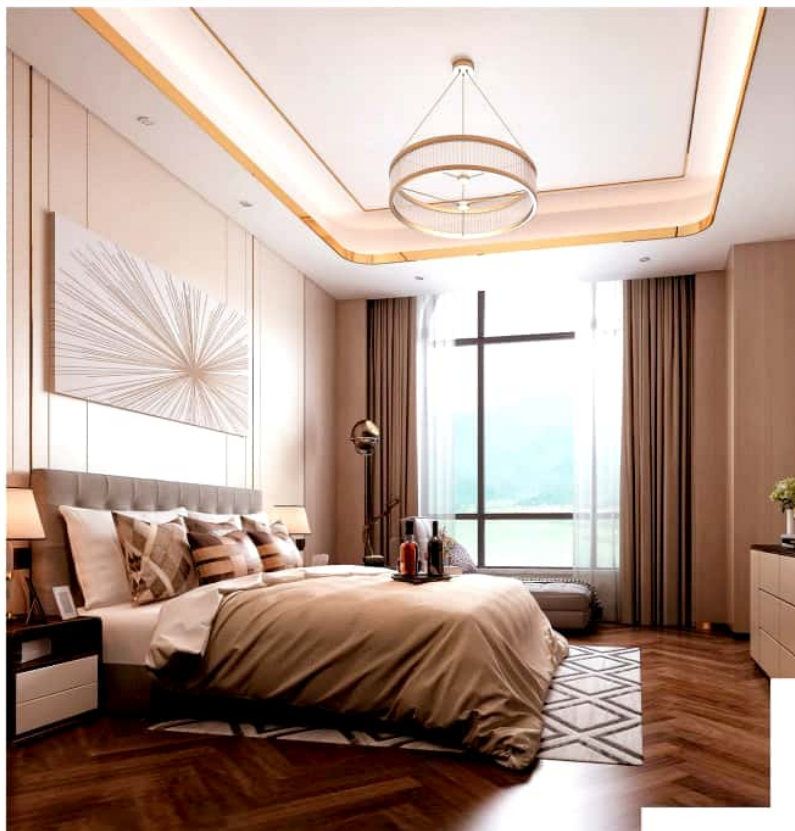
Artist's impression

# ADD BLISSFUL MOMENTS TO YOUR DAY BY UNWINDING IN OUR MINI GOLF AREA



Artist's impression





Images For Representational Purpose Only



# AN ASSORTMENT OF THOUGHTFUL LIVING SPACES THAT IS FIT FOR LIFE



While creating your dream living space, we have adopted the philosophy that detail is everything. With thoughtfully designed spaces, experience luxury and brilliance tailored to give you the life that you truly deserve.



## OUR LIVING ROOMS

with 1-meter-wide sundeck offer a beautiful backdrop for your morning chai or a romantic candle-lit dinner.



## OUR SPACIOUS BEDROOMS

are thoughtfully designed to provide ample ventilation and abundant space which can also be converted to makeshift workstations.



## OUR FULLY EQUIPPED HOMES

come with a range of electronic goods like AC, washing machine, Aquaguard, geyser, chimney & hob to ease your experience\*.



## OUR THOUGHTFUL SPACES

that are vastu compliant homes with spacious loft for your storage requirement

\* Valid till 31<sup>st</sup> March 2022

# A MYRIAD RANGE OF INTERNAL AMENITIES THAT IS FIT FOR LIFE



## LIVING ROOM & BEDROOM

- 800x800 vitrified flooring
  - Powder coated aluminium sliding windows
  - Video door phone
  - Wall finish - plastic emulsion paint
- 



## KITCHEN

- 800x800 vitrified flooring
  - Smoke detectors
  - Stainless steel sink
  - Dado upto 2 ft above platform
  - Provision of inlet and outlet for water purifier
  - Modular switches of roma or equivalent
  - Provision of support for mgpl piped gas
  - Granite kitchen platform
  - Exhaust fan
  - Provision for inlet and outlet for washing machine
- 



## BATHROOM

- Concealed piping
  - Anti skid flooring
  - Dado tiles upto door height
  - Exhaust fan
  - Cp branded fixtures (jaquar or equivalent)
- 



## COMMON AMENITIES

- Generator back up for lift & common areas
- High speed elevators (4 passenger lifts)
- 1 fire lift
- Rain water harvesting
- Organic waste management
- Led light fixtures in common area
- Society office
- Boom barriers at security gate



# PANORAMA OF VIEWS THAT IS FIT FOR LIFE

---

There is nothing as blissful as observing a bustling city from a high altitude. At Ashar Axis, you can admire breathtaking panoramic vistas from your personal space.

Image For Representational Purpose Only

## IMMEDIATE DEVELOPMENT



- Wadala-Kasarvadavali Metro line 4
- Kapurbawdi-Bhiwandi Metro line 5
- Majiwada Metro Station 300 mtrs
- Kapurbawdi Metro Station 1 km

## FUTURE DEVELOPMENT



A 10-Kilometer underground tunnel  
connecting Thane to Borivali

---



Vitawa Bypass road,  
connecting Kopri to Thane-Belapur Road

---



TATA Cancer Hospital at Dhokali



# CONSTRUCTING DREAM SPACES FIT FOR LIFE

At Ashar Group, we believe in creating structures that outlive us. We are on a constant quest to upgrade spaces and abide by our commitments of delivery. For us, promises mean everything and we believe in delivering not just living spaces, but homes that allow everyone to experience total happiness.

Our uncompromising values, customer-centric attitude, robust engineering, and transparency in business operations have made us one of the most preferred real estate brands in the MMR region.



**3 Years Average**  
Construction  
Turnaround Time



**ZERO RERA**  
Complaints



**8 Mn. Sq. ft.**  
Delivered

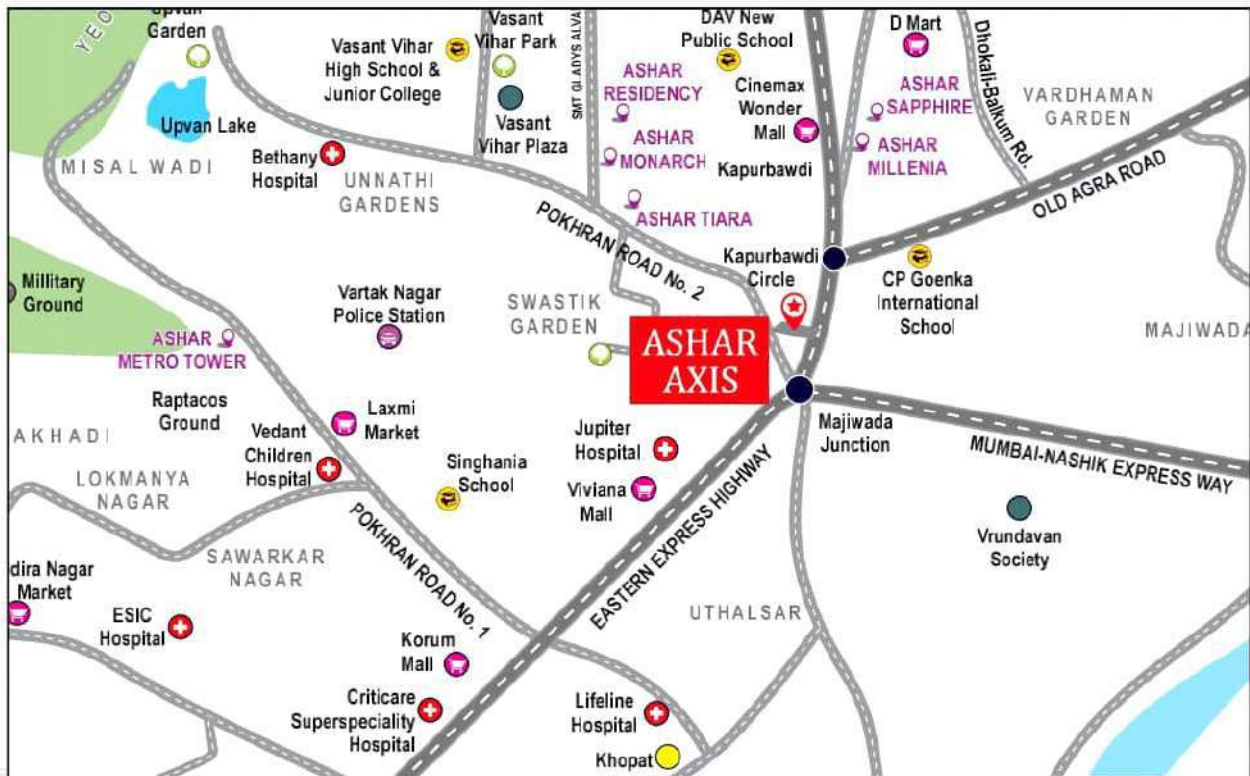


**20 + Years**  
of Legacy

FROM THE MAKERS OF

# FIRST

- ✓ Largest IT Park of Thane: ASHAR IT PARK
- ✓ International School of Thane: BILLABONG HIGH INTERNATIONAL SCHOOL
- ✓ Jewel of Pall Hill: NAVROZE



**ASHAR**  
PROMISES DELIVERED

Site Address: Ashar Axis, Next to BP Petrol Pump, Majiwada Junction, Thane (W) - 400601.

MahaRERA Registration No. P51700032665, available on [www.maharera.mahaonline.gov.in](http://www.maharera.mahaonline.gov.in)

Disclosure: This advertisement does not constitute any form of an offer and/or agreement and all purchases/leases shall solely be governed by the terms and conditions of the agreement for sale/lease. All images are for representative purpose unless otherwise noted. The timings shown here are approximate and may vary depending on traffic conditions. T&C apply.